

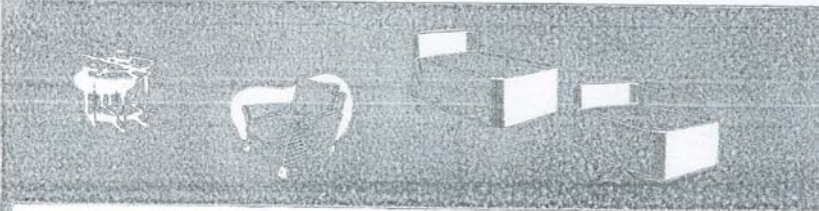
# RENTAL

# ACCOMMODA

## TYPE A

ENTRANCE HALL  
LIVING ROOM  
BALCONY  
TWO BEDROOMS  
KITCHEN  
BATHROOM & W.C.

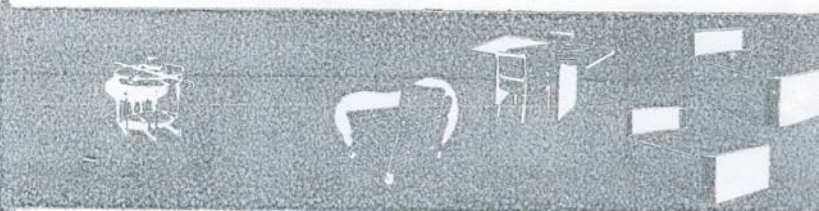
FROM **£120**  
INCLUSIVE ANNUAL RENTAL



## TYPE B

ENTRANCE HALL  
LOUNGE  
BALCONY  
DINING ROOM  
TWO BEDROOMS  
KITCHEN  
BATHROOM & W.C.

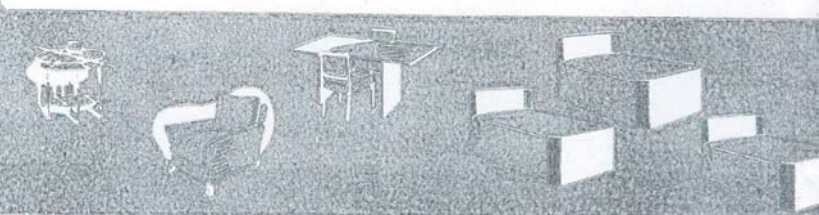
FROM **£135**  
INCLUSIVE ANNUAL RENTAL



## TYPE C

ENTRANCE HALL  
LOUNGE  
BALCONY  
DINING ROOM  
THREE BEDROOMS  
KITCHEN  
BATHROOM & W.C.

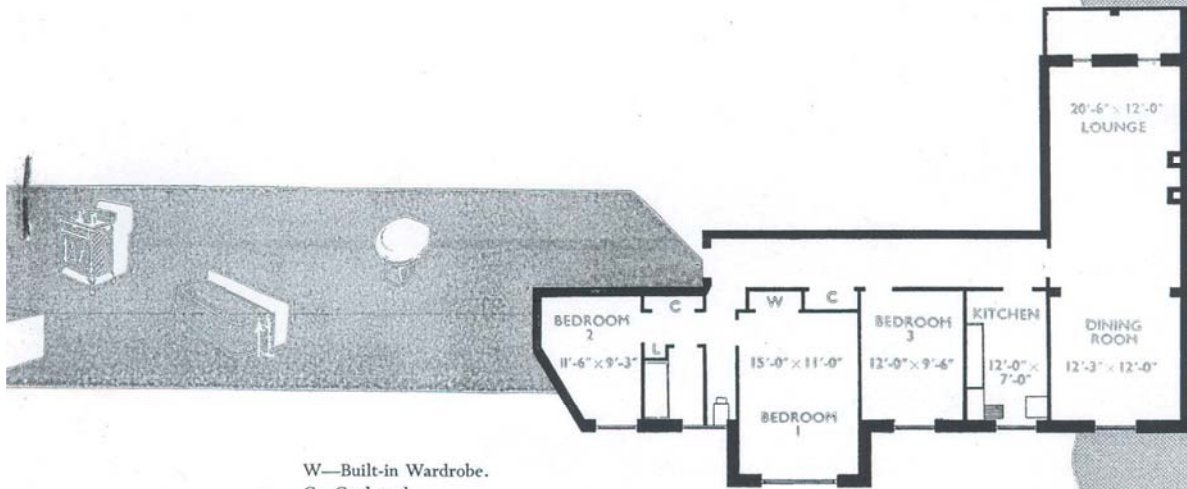
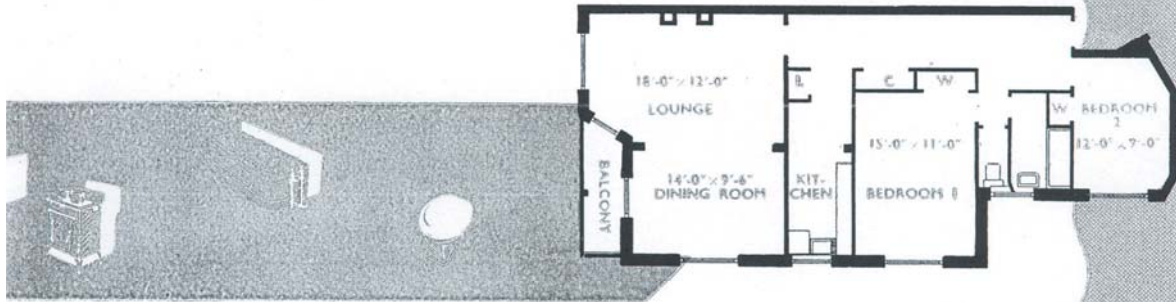
FROM **£160**  
INCLUSIVE ANNUAL RENTAL



The rentals stated in this booklet are absolutely inclusive—there are no “extras” whatever. No charge is made for the preparation of the lease.

# ATION

# SPECIMEN PLAN



W—Built-in Wardrobe.  
 C—Cupboard.  
 L—Linen Cupboard.

# SERVICES *and* AMENITIES



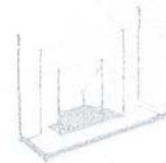
**RESTAURANT.**—Space has been reserved on the ground floor for a restaurant. It is intended to consult tenants as to their wishes, and if sufficient patronage is assured a restaurant will be opened. It will be proposed that a Residents' Committee shall be formed to control the character, tariff and management of the restaurant, basing charges on a cost-plus-overheads calculation. The management would desire to make no profit from the catering.

**ROOF GARDEN.**—There is a roof garden with commanding views over seas and downland. Tenants may lounge in comfort here, inhaling the fine air that makes Hove one of the healthiest places on the South Coast. The grounds are to be laid out with lawns, flowerbeds and a putting green.



**CENTRAL-HEATING**  
Radiator in every room.

A comfortable open fire-place in the lounge.



A point for a gas fire in the lounge and for cooking in the kitchen.

A point for an electric heater in every room.



A point in every room for auxiliary lighting.

Point in lounge for G.P.O. telephone.



Hot-water, abundant and softened, 24 hours of the day. Heated towel rail.

In the kitchen, a built-in modern fitment for efficient storage of stores and utensils.





Electric automatic control lifts for every flat.  
Separate tradesmen's lifts.



Reasonable storage room for baggage.



Private garages are available at moderate rentals.

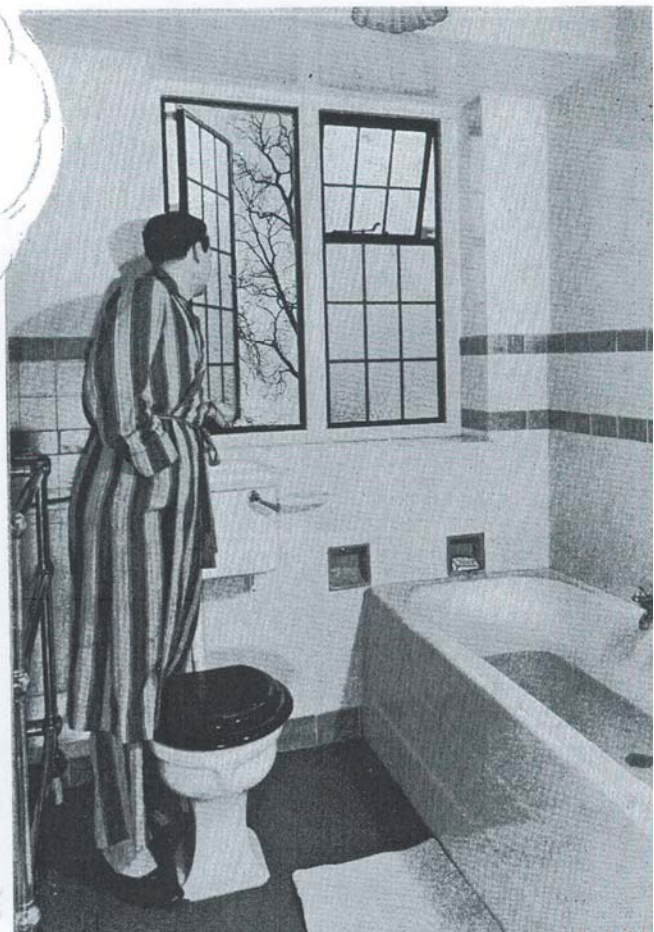


The colour schemes for the decoration of the flat are decided by the tenant.



## CONSTANT HOT WATER

A really hot bath at any time of the day or night . . . . . constant SOFTENED hot water at a turn of the tap . . . . . central heating at an even temperature . . . . . that's the job of these "robots."



# DIVERSIONS



## BATHING

Very fine facilities are provided for this most popular seaside pastime. Provision is made for bathing from the beach; huts can be hired at reasonable charges. There are also two salt-water swimming baths on the Medina Esplanade.



## BOATING

You may row on the sea or you may hire a boat and be rowed. A number of speed-boats ply from the beach, and steamboats make short trips along the South Coast and across the English Channel to France.



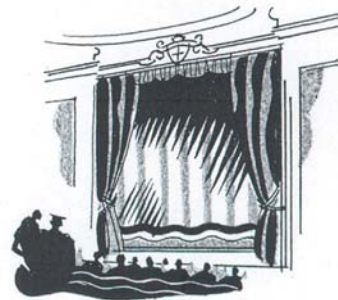
## BOWLS

In the Public Parks of Hove and Brighton there are altogether 20 greens. Various clubs have their own Greens and welcome visitors or new members. There are tournaments at Brighton in July and at Hove in August.



## CINEMAS & THEATRES

There is theatre entertainment at the Hippodrome, Middle Street, and at the Theatre Royal, New Road. There are 18 cinemas in all, including the Astoria, the Regent and the Savoy, the three largest and most modern.



## CONCERTS

There are military bands on both piers and special concerts from time to time in the several concert halls at which famous artistes frequently appear.



## CRICKET

For those who enjoy watching this, one of England's most popular sports, there is the Sussex County Ground at Eaton Road, only a few minutes' walk from Wick Hall. Matches are also held regularly in the public parks.



## DANCING

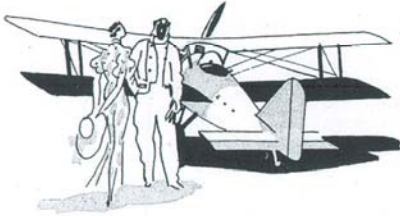
In addition to several high-class dance halls in Hove, there is also dancing on the Green to the band on Summer evenings. The very pleasant western lawns are used for this purpose.

## FISHING

Excellent fishing can be had from boats and from both piers all the year round. Among the fish caught in season at Hove are Bass, Mackerel, Sea Bream, Codling, Conger, Pollack, Whiting and Cod. There are several local anglers' clubs from which information can be obtained in more detail.



# AT HOVE



## FLYING

Excellent facilities for air travel are provided in the district around Hove. For the business man who must make journeys at short notice there is the Brighton, Hove and Worthing Municipal Airport at Shoreham.

## GOLFING

Seven 18-holes and two 9-holes (ladies') Golf Courses are within easy reach of Wick Hall. The Brighton Golf Tournament is held on the Brighton and Hove Golf Club in July. Most of the clubs admit visitors and allow Sunday play.

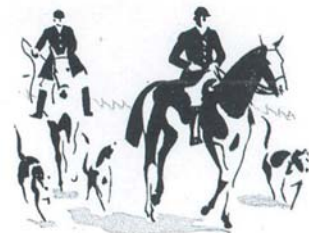


## HIKING

For those who enjoy country walks there are the Downs, where one may walk in the sunshine and fresh air with glorious views inland and over the Sussex coastland, with the sea beyond.

## HUNTING & RIDING

The gently undulating hills that form some of the most charming parts of the South Downs on the northern boundary of Brighton and Hove offer excellent facilities for horse-riding. There are twenty square miles of open country, including straight gallops of one and a half miles.

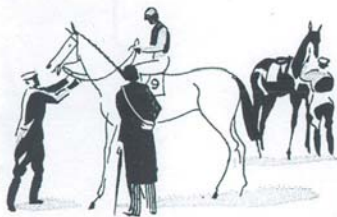


## MOTORING

For those whose pleasure lies with the car and the open road, Hove's surrounding country offers unrivalled opportunity for exploration. There are very many pleasant drives over the South Downs and along the Sussex Coast.

## PARKS

There are a dozen parks in the close vicinity of Wick Hall, most of them within walking distance. St. Ann's Well Gardens is immediately adjacent, and a short walk down the promenade will bring you to the Western Lawns.



## RACING

Meetings are held in May, August, September and October on the Brighton Racecourse. Several other meetings are held at courses within easy reach. "The Sussex Fortnight," comprising the Goodwood, Brighton and Lewes Meetings, is one of the chief attractions in the summer season.

## TENNIS

Within easy reach of Wick Hall there are a large number of exclusive Tennis Clubs; new members are welcome.



# TRAVELLING

## RAIL

**W**ICK HALL is quite near to Brighton Station and Hove Station (Southern Railway). Every 20 minutes there is one train up and one down, the ordinary trains taking  $1\frac{1}{4}$  hours and one per hour doing the journey in exactly one hour. The Brighton Belle, down at 11 a.m., 3 p.m. and 7 p.m., and up at 1.25 p.m., 5.25 p.m. and 9.25 p.m. is a Pullman train only, a super luxury mile-a-minute express. It is possible that an improvement even on this remarkable service may be made in the near future; thus travel conditions are ideal for business, shopping and pleasure trips to Town.

### Season Ticket Rates

12 months

1st Class

3rd Class

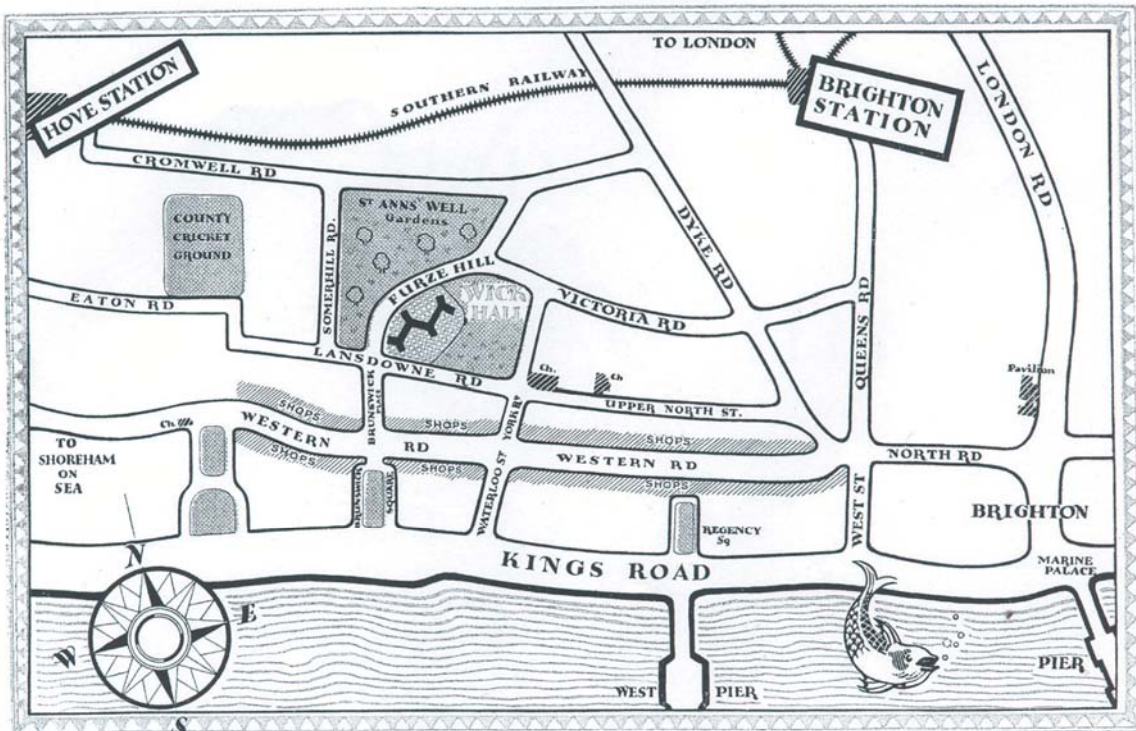
Brighton or Hove to Victoria, Charing Cross, London Bridge or Cannon Street

£52

£37 16 0

## AIR

Regular service of air lines from Shoreham Airport to the Continent and other inland airports.




# LIVING

# MADE EASY



—is what we present to you at Wick Hall; not merely a flat at a reasonable rental, more than that. We present a system and a philosophy of living which preaches that men and especially women should be freed of domestic worries to LIVE. That is the end we have striven for and gained at Wick Hall.

The Letting Manager and staff are on duty seven days of the week (Telephone : Hove 3369). A specimen flat, completely furnished by Maple & Co., Ltd. (London and Brighton), is open for inspection at Wick Hall every day until dusk, including Sunday.



WICK HALL  
IS A  
BELL BUILDING

## BELL MODERN FLATS

Telephone: MAYfair 4201  
(6 lines)

115 PARK STREET, LONDON, W.1

*Whilst all the details in this brochure are believed to be correct, nothing herein is to be held to constitute part of a contract.*